

WT-33 SERIES



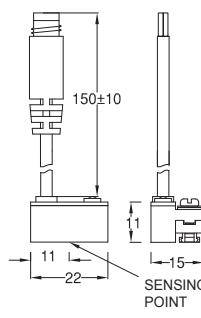
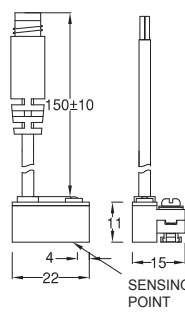
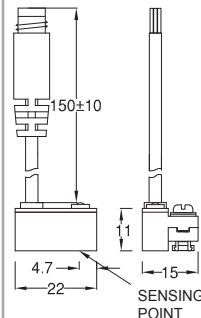
DIMENSION

WT-33N, WT-33P

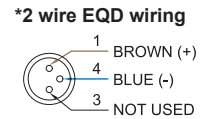
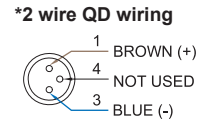
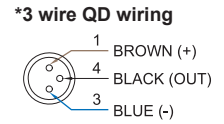
WT-33N-QD, WT-33P-QD

WT-33D / WT - 33D-QD

WT-33R / WT-33R-QD



QD PINOUT



Unit:mm

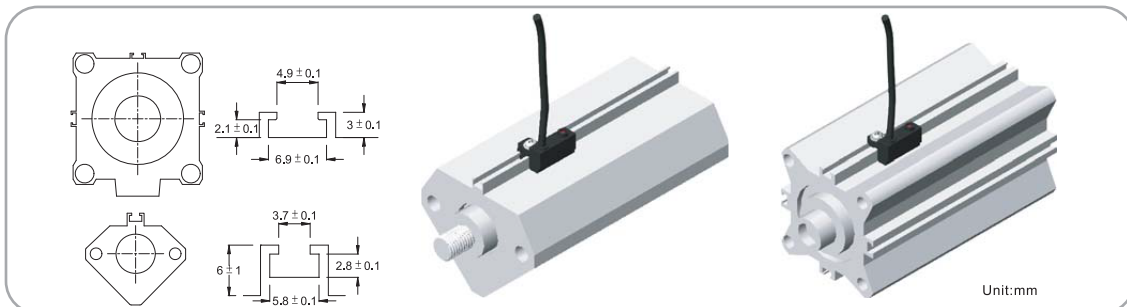
SPECIFICATION

TYPE	WT-33R	WT-33D	WT-33N	WT-33P
CONNECT DIAGRAM				
CHARACTERISTICS	2-Wire Type		3-Wire Type	
WIRING METHOD	SPST, Normally Open		Solid State Output, Normally Open	
SWITCHING LOGIC	Reed Switch	--	NPN Current Sinking	PNP Current Sourcing
SENSOR TYPE	5~240V DC/AC	10~28V DC/AC	5~30V DC	
OPERATING VOLTAGE	100 mA max.	4~40 mA max.	200 mA max.	
SWITCHING CURRENT	10 W max.	1.5 W max.	6 W max.	
CONTACT RATING (NOTE 1)	--		22 mA @ 24V DC max.	20 mA @ 24V DC max.
CURRENT CONSUMPTION	3.5 V max.		0.5 V max.	
VOLTAGE DROP	--	1 mA max	0.01 mA max.	
LEAKAGE CURRENT	Red LED	Green LED	Red LED	Green LED
INDICATOR	ø3.3, 2C, PVC		ø3.3, 3C, PVC	
CABLE	200 Hz		1000 Hz	
OPERATING FREQUENCY	60 Gauss		40 Gauss	
MAGNET REQUIREMENT (NOTE 2)			-10~70°C	
TEMPERATURE RANGE	30 G		50 G	
SHOCK (NOTE 3)			9 G	
VIBRATION (NOTE 4)	IEC 529 IP 67			
ENCLOSURE CLASSIFICATION	1	4	3,4	
PROTECTION CIRCUIT (NOTE 5)				

NOTE:

1. **WARNING:** Never exceed rating (Watt=Voltage x Amperage). Permanent damage to sensor will occur.
2. Measuring standard target: ø15.5Xø8X5t (Anisotropy rubber magnet)
3. Sin wave / X, Y, Z 3 directions / 3 times each direction / 11 ms each time.
4. Double amplitude 1.5 mm / 10Hz~55Hz~10Hz (Sweep 1 min) / X, Y, Z 3 directions / 1 hour each time.
5. 1=None / 2=Short-circuit / 3=Power Source Reverse polarity / 4=Surge Suppression

GROOVE DIMENSION



Unit:mm